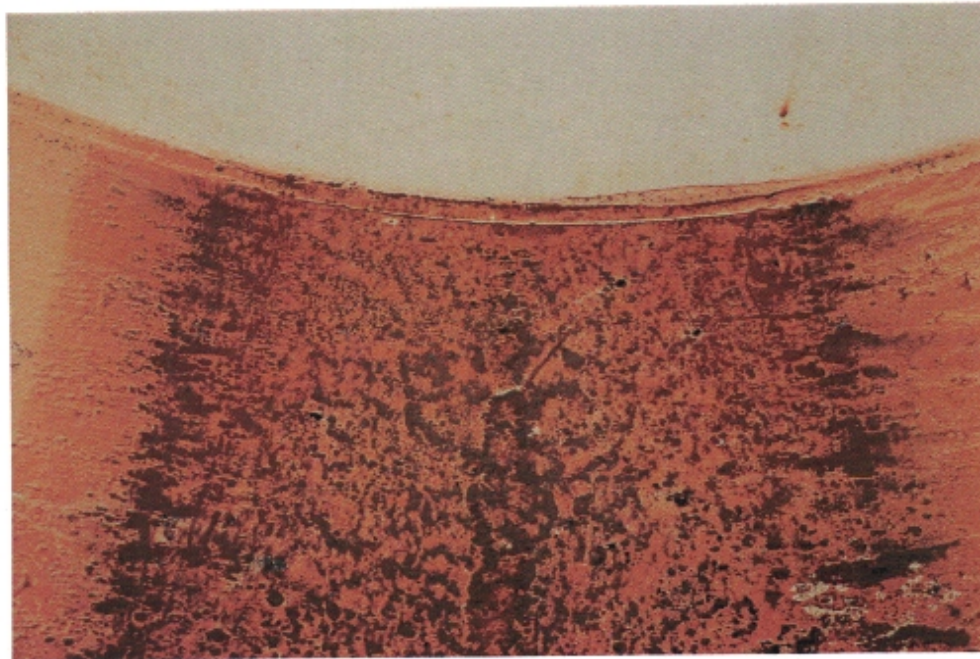


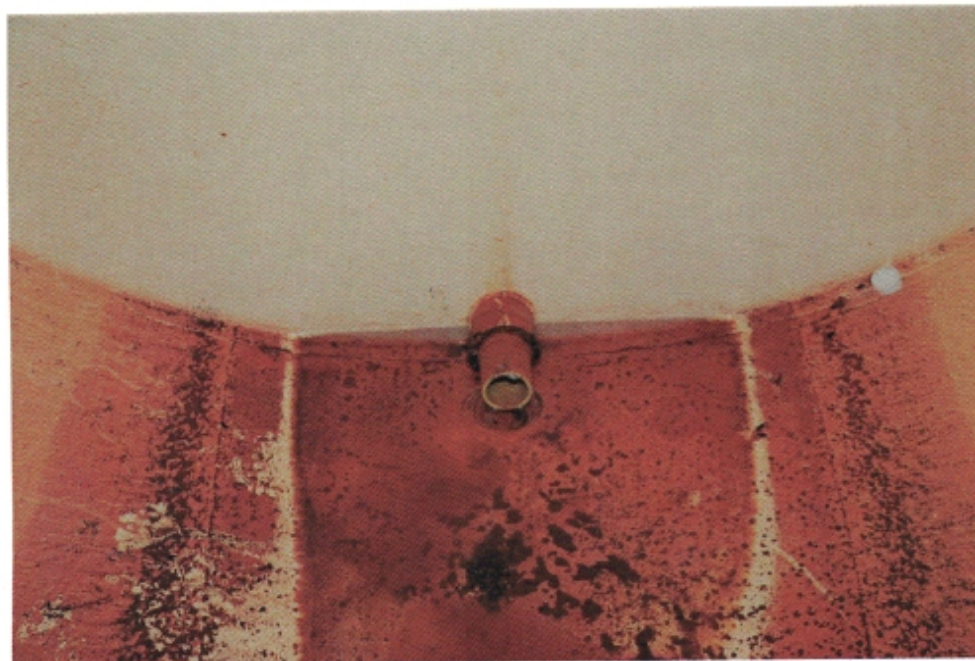
- I-14 View of the shell, illustrating a cut-out that appears to have been patched from the exterior of the reservoir.



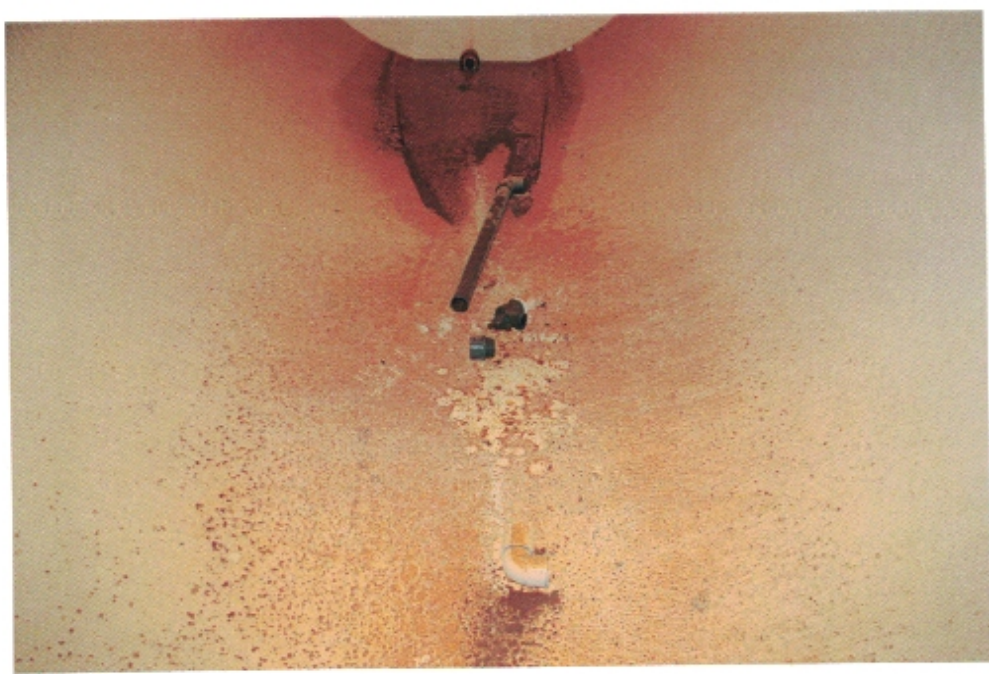
- I-15 View of the lower portion of the reservoir, illustrating dark sediment on the bottom surfaces and minor spot corrosion on the dished head.



- I-16 Same as Photo I-15, except at the opposite end of the reservoir.



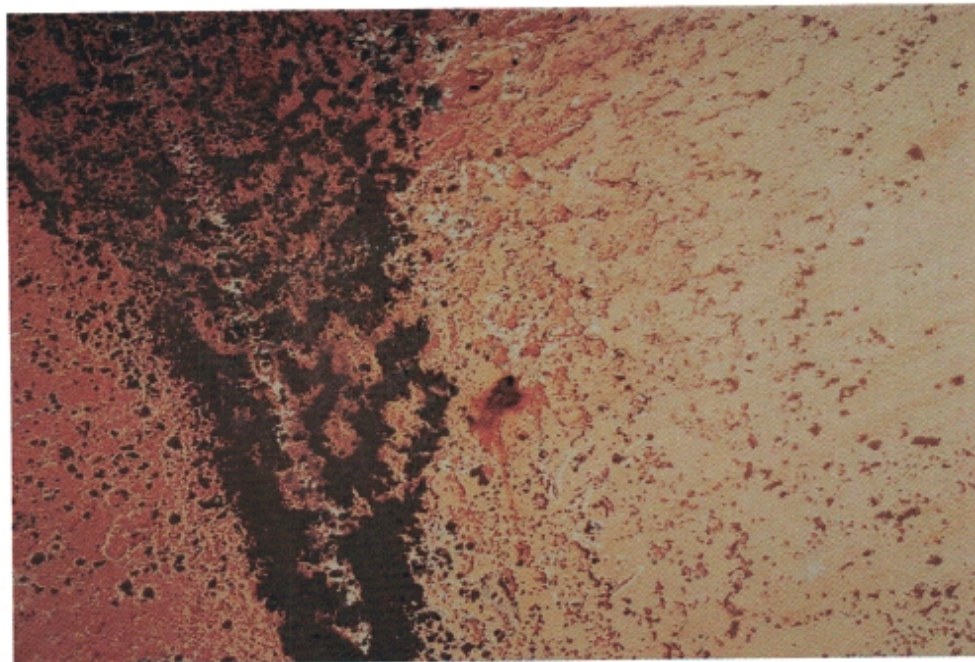
- I-17 General view of the bottom of the reservoir, illustrating random debris present.



- I-18 Same as Photo I-17, except from the opposite end of the reservoir. Note the debris has been removed.



- I-19 Close-up view of the bottom, illustrating a rust tubercle present.



I-20

Same as Photo I-19, except the rust tubercle has been removed to examine the substrate. Note moderate to severe pitting present.



I-21

View of the manway from above, illustrating delamination on the underside of the cover and minor corrosion along the top edge of the hatch curb.



I-22

Same as Photo I-21, except the hatch is closed. Note moderate general corrosion on the handle, hinge, and exterior of the hatch curb.



- I-23 View of the inlet vault, illustrating minor mechanical damage and corrosion on the piping and valve.



- I-24 General view of the site above the reservoir, illustrating the hatch cover and inlet vault.

